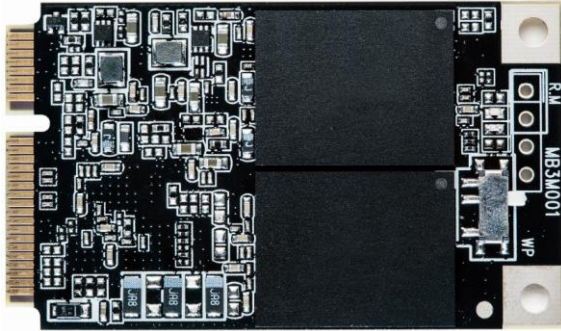


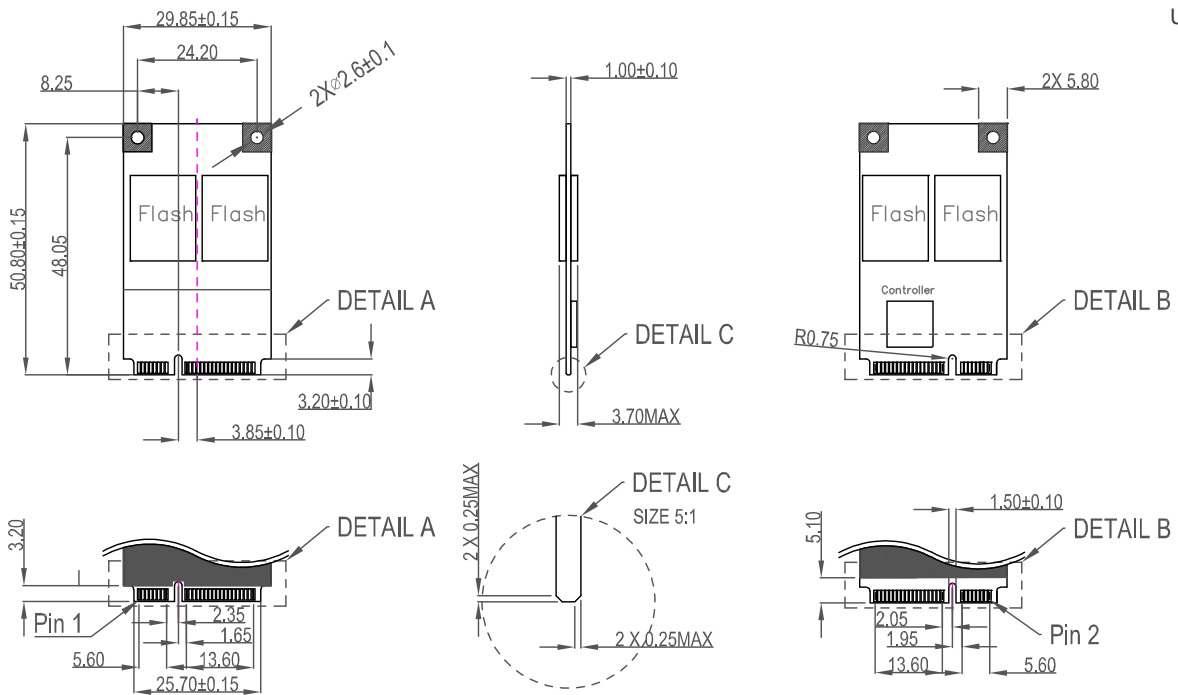
mSATA Series



The MemxPro mSATA series is a flash module compliant with JEDEC MO-300/MO-300A standard. mSATA products can be configured as boot drives or data storage devices, providing better performance and efficiency with faster read/write speeds, while reducing startup, file transfer, and software application load times. MemxPro's mSATA M3B series include optional hardware design versions for write protect or secure erase.

- Compliant with JEDEC MO-300A specification.
- SATA III interface running at up to 6Gb/s.
- SLC/StrongMLC/MLC versions in standard, extended, and industrial grade temperature ranges.
- Global wear leveling, bad block management with built-in ECC, and optional write protect or quick erase features.
- SMARTPro device monitoring tool or SDK library support.

Unit: mm



Product Model	mSATA M3B	mSATA G3B	mSATA S3B
Interface	SATA III	SATA III	SATA III
Form Factor	mSATA (MO300A)	mSATA (MO300A)	mSATA (MO300A)
Flash Type	MLC	StrongMLC	SLC
Max. Channel	4	4	4
Density	16GB-512GB	8GB-256GB	8GB-128GB
Sequential R/W (MB/sec, max.)	505/331	514/421	520/430
Operating Temperature	0°C~+70°C/-25°C~+85°C/-40°C~+85°C	0°C~+70°C/-25°C~+85°C/-40°C~+85°C	0°C~+70°C/-25°C~+85°C/-40°C~+85°C
Max. Power Consumption	2.9W (3.3Vx880mA)	2.9W (3.3Vx880mA)	2.9W (3.3Vx880mA)
Dimension (LxWxH/mm)	50.8x29.85x3.75	50.8x29.85x3.75	50.8x29.85x3.75
Operating Voltage	3.3V±5%	3.3V±5%	3.3V±5%
Storage Temperature	-55°C~+95°C	-55°C~+95°C	-55°C~+95°C
External DRAM Buffer	N/A	N/A	N/A
Thermal Sensor	V	V	V
DEVSLP Mode	< 5mw	< 5mw	< 5mw
ATA Security	V	V	V
S.M.A.R.T.	V	V	V
TRIM	V	V	V
Vibration	20G (7-2KHz)	20G (7-2KHz)	20G (7-2KHz)
Shock Resistance	1500G@0.5ms	1500G@0.5ms	1500G@0.5ms
MTBF	>3 million hours	>3 million hours	>3 million hours

Note: SLC products are supported upon request with MOQ requirement.

MemxPro Inc.

Tel : 886-2-8978-8997 Fax : 886-2-3393-0516 E-mail: info@memxpro.com

Address: 4F., No.32, Xiwei St., Sanchong Dist., New Taipei City, 24155, TAIWAN(R.O.C.)