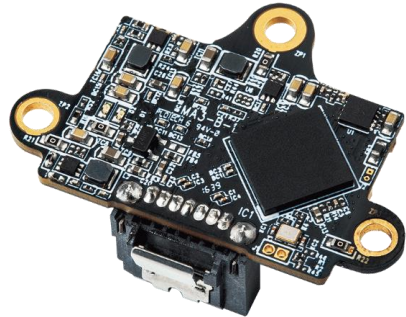
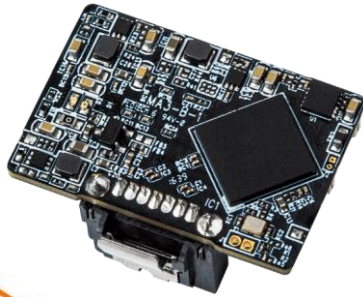
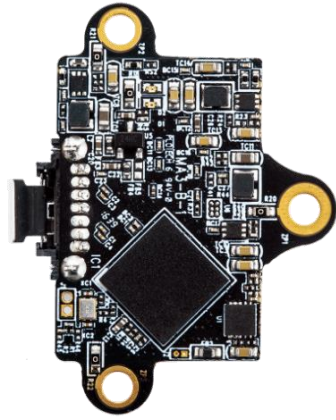
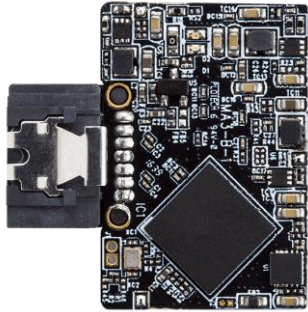
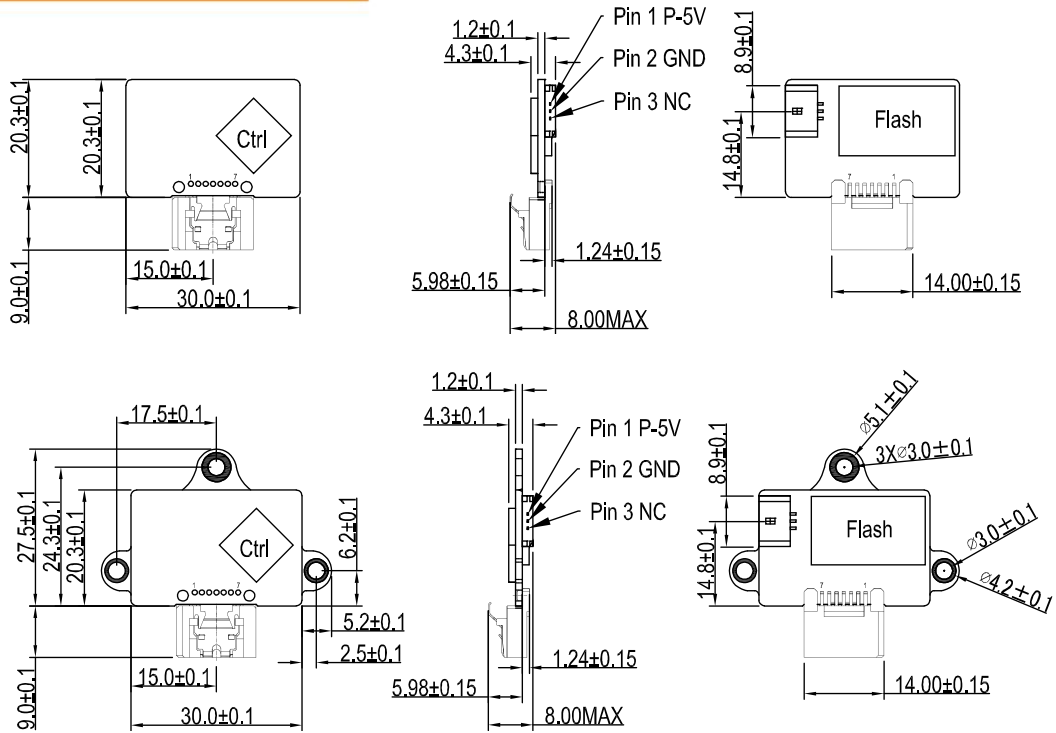


SATA Module Series



The MemxPro SATA Module series are a miniature yet powerful design. Easy plug & play installation for fast access, its small footprint is ideal for space-limited embedded systems and mobile applications.

- 7-pin 90-degree and 180-degree SATA connector designs.
- SATA III interface running at up to 6Gb/s.
- StrongMLC/MLC versions in standard, extended, and industrial grade temperature ranges.
- Small form factor and easy plug & play installation.
- Global wear leveling, bad block management with built-in ECC, and optional security features.
- SMARTPro device monitoring tool or SDK library support.

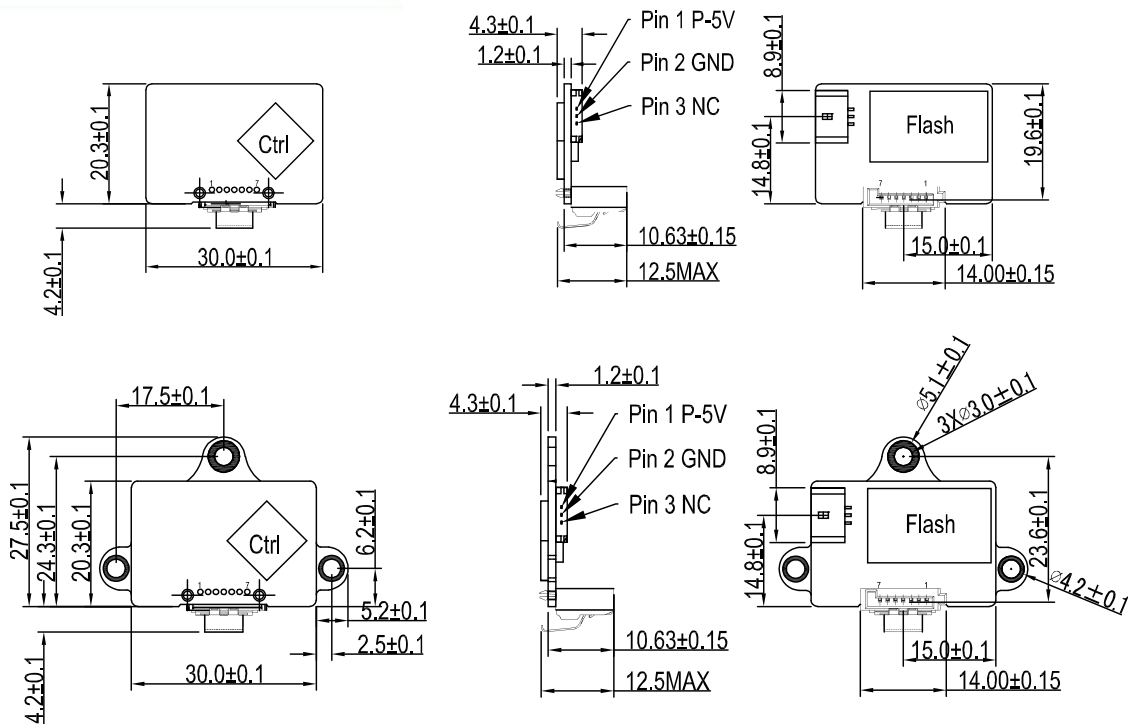


Unit: mm

Product Model	SATA Module M3B		SATA Module G3B		SATA Module S3B	
Interface	SATA III		SATA III		SATA III	
Form Factor	7-pin (180°)	7pin (180°) screw holes	7-pin (180°)	7-pin (180°) screw holes	7-pin (180°)	7-pin (180°) screw holes
Flash Type	MLC		StrongMLC		SLC	
Max. Channel	2		2		1	
Density	16GB~128GB		8GB~64GB		4GB~32GB	
Sequential R/W (MB/sec, max.)	348/101		354/154		39/33	
Operating Temperature	0°C~+70°C/-25°C~+85°C/-40°C~+85°C					
Max. Power Consumption	1.25W (5Vx250mA)					
Dimensions (LxWxH/mm)	24.5x30.0x12.5	29.3x30.0x8.0	24.5x30.0x12.5	29.3x30.0x8.0	24.5x30.0x12.5	29.3x30.0x8.0
Operating Voltage	5V±5%					
Storage Temperature	-55°C~+95°C					
External DRAM Buffer	N/A					
Thermal Sensor	✓		✓		✓	
DEVSLP Mode	N/A					
ATA Security	✓		✓		✓	
S.M.A.R.T.	✓		✓		✓	
TRIM	✓		✓		✓	
Vibration	20G (7~2K Hz)					
Shock Resistance	1500G@0.5ms					
MTBF	>3 million hours					

Note: SLC products are supported upon request with MOQ requirement.

Unit: mm



Product Model	SATA Module M3B		SATA Module G3B		SATA Module S3B	
Interface	SATA III		SATA III		SATA III	
Form Factor	7pin (90°)	7pin (90°) screw holes	7pin (90°)	7pin (90°) screw holes	7pin (90°)	7pin (90°) screw holes
Flash Type	MLC		StrongMLC		SLC	
Max. Channel	2		2		1	
Density	16GB~128GB		8GB~64GB		4GB~32GB	
Sequential R/W (MB/sec, max.)	348 /101		354/154		39/33	
Operating Temperature	0°C~+70°C/-25°C~+85°C/-40°C~+85°C		0°C~+70°C/-25°C~+85°C/-40°C~+85°C		0°C~+70°C/-25°C~+85°C/-40°C~+85°C	
Max. Power Consumption	1.25W (5Vx250mA)		1.25W (5Vx250mA)		1.25W (5Vx250mA)	
Dimension (LxWxH/mm)	24.5x30.0x12.5	31.7x40.4x12.5	24.5x30.0x12.5	31.7x40.4x12.5	24.5x30.0x12.5	31.7x40.4x12.5
Operating Voltage	5V±5%		5V±5%		5V±5%	
Storage Temperature	-55°C~+95°C		-55°C~+95°C		-55°C~+95°C	
External DRAM Buffer	N/A		N/A		N/A	
Thermal Sensor	✓		✓		✓	
DEVSLP Mode	N/A		N/A		N/A	
ATA Security	✓		✓		✓	
S.M.A.R.T.	✓		✓		✓	
TRIM	✓		✓		✓	
Vibration	20G (7~2KHz)		20G (7~2KHz)		20G (7~2KHz)	
Shock Resistance	1500G@0.5ms		1500G@0.5ms		1500G@0.5ms	
MTBF	3 million hours		3 million hours		3 million hours	

Note: SLC products are supported upon request with MOQ requirement.

MemxPro Inc.

Tel : 886- 2-8978-8997 Fax : 886-2-3393-0516 E-mail: info@memxpro.com

Address: 4F., No.32, Xiwei St., Sancong Dist., New Taipei City, 24155, TAIWAN(R.O.C.)

© MemxPro Inc. MemxPro reserves the right to change products, information and specifications without notice and is provided on an "AS IS" basis, without warranties of any kind. Products and specifications discussed herein are for reference purposes only. No license of any patent, copyright, mask work, trademark or any other intellectual property right is granted by one party to the other party under this document, by implication, estoppel or otherwise. For updates or additional information about MemxPro products, please contact MemxPro office.

V.02 20170921

www.memxpro.com